

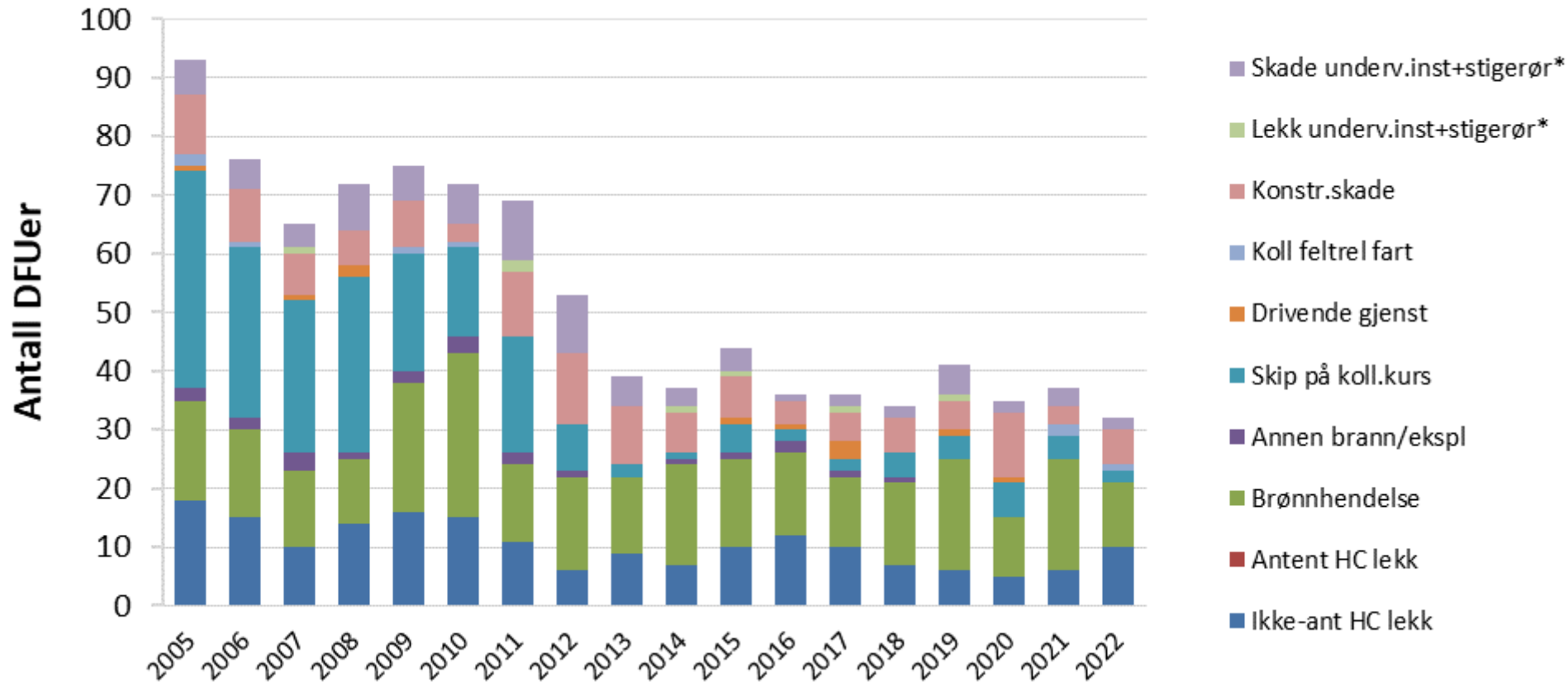
# **RNNP-resultater 2022**

## **– Storulykke**

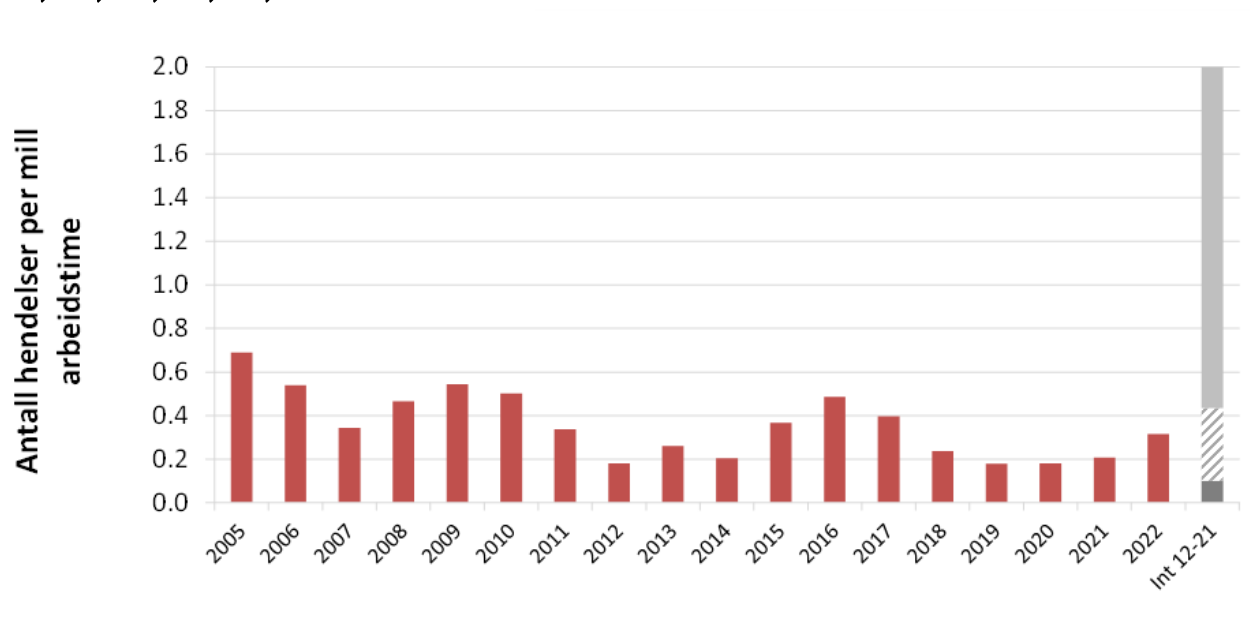
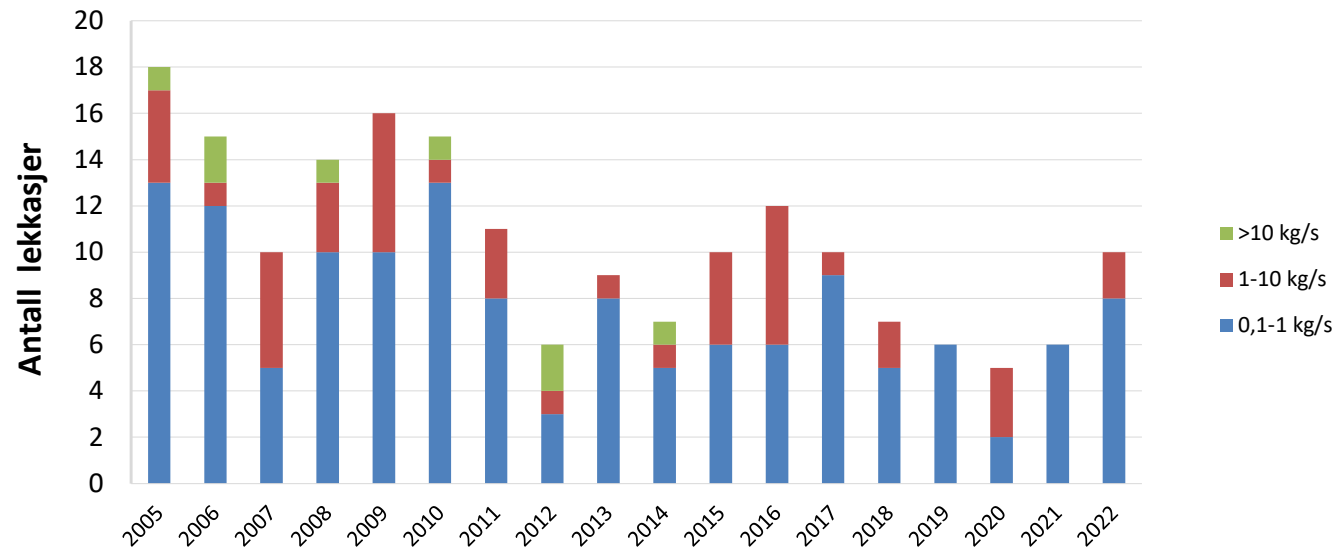
Torleif Husebø, fagleder, Ptil

# Registrering av DFUer

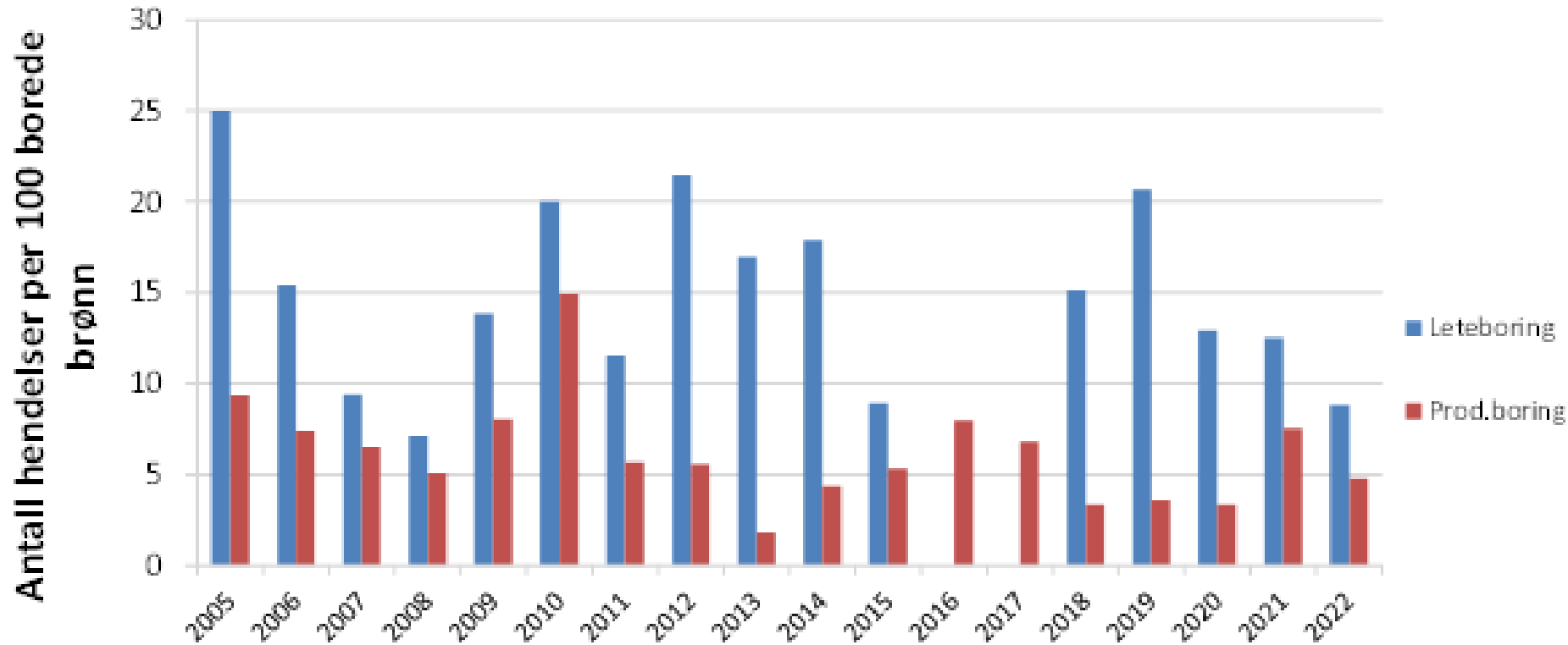
- alle innretninger (ikke helikopter)



# Ikke-antente HC-lekkasjer

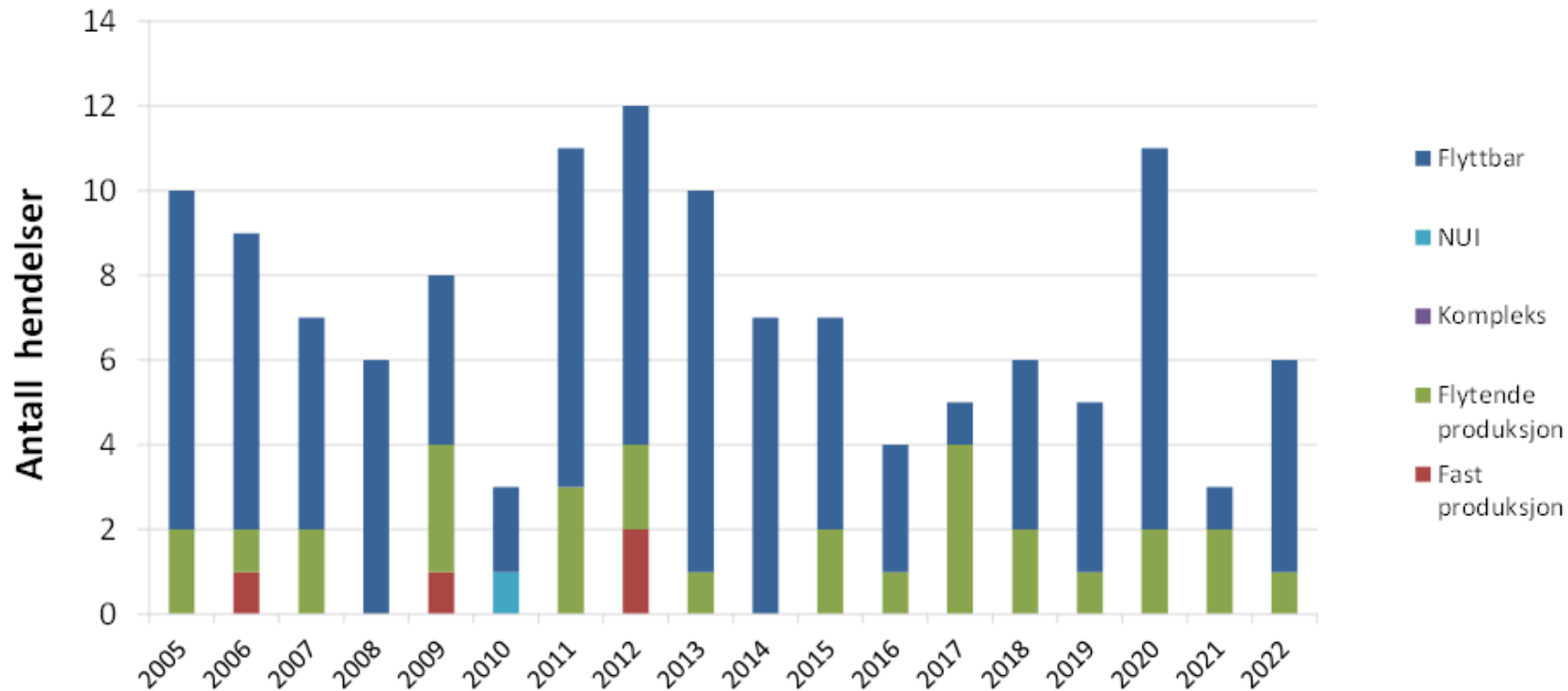


# Brønnkontrollhendelser



I 2022 var det 11 brønnkontrollhendelser - alle hendelsene er klassifisert med lav alvorlighet.

# Skade på bærende konstruksjoner



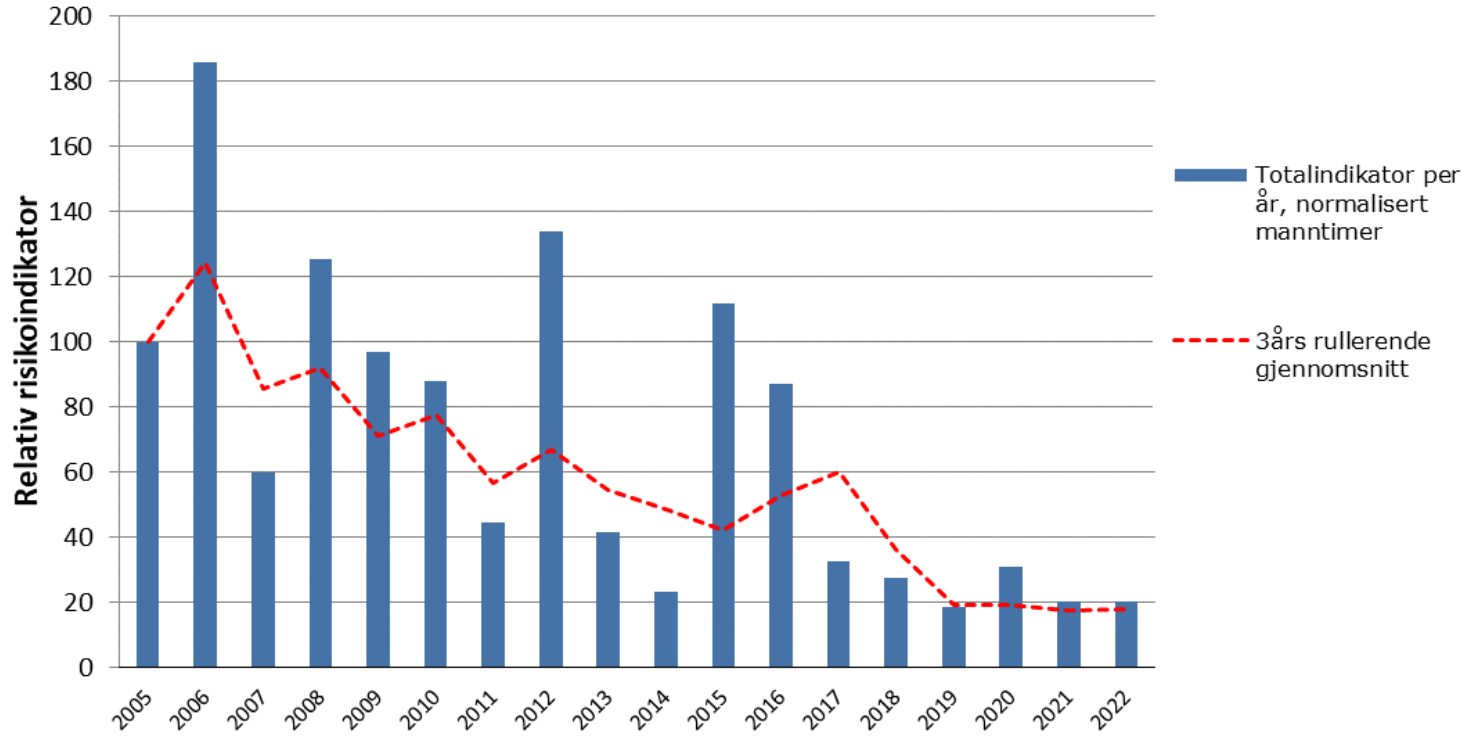
## 6 hendelser i 2022:

2 hendelser med forankringsystemet

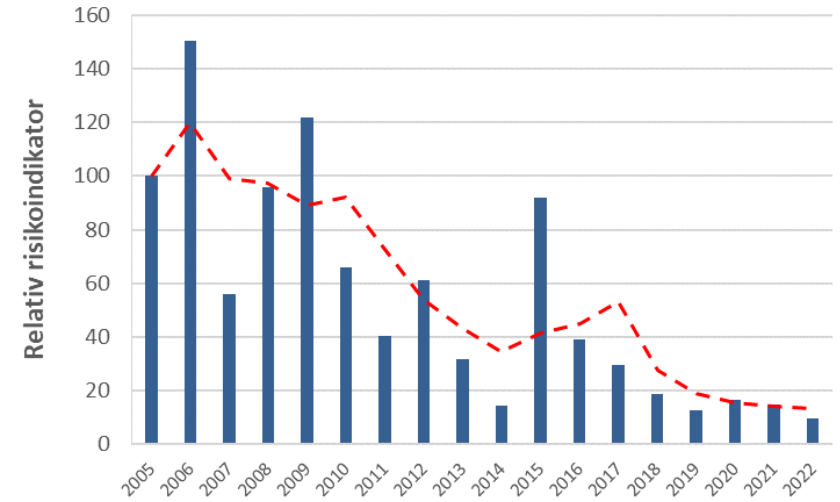
3 stabilitetshendelser

1 hendelse med alvorlig sprekk

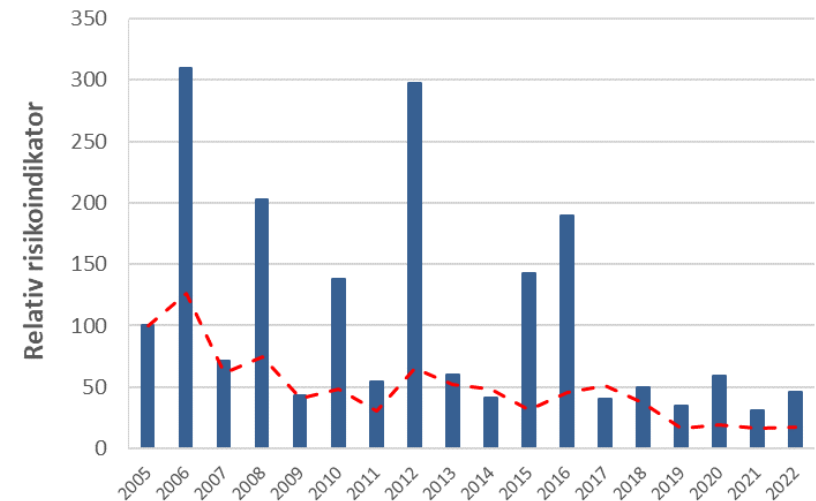
# Totalindikator



## Produksjonsinnretninger



## Flyttbare innretninger



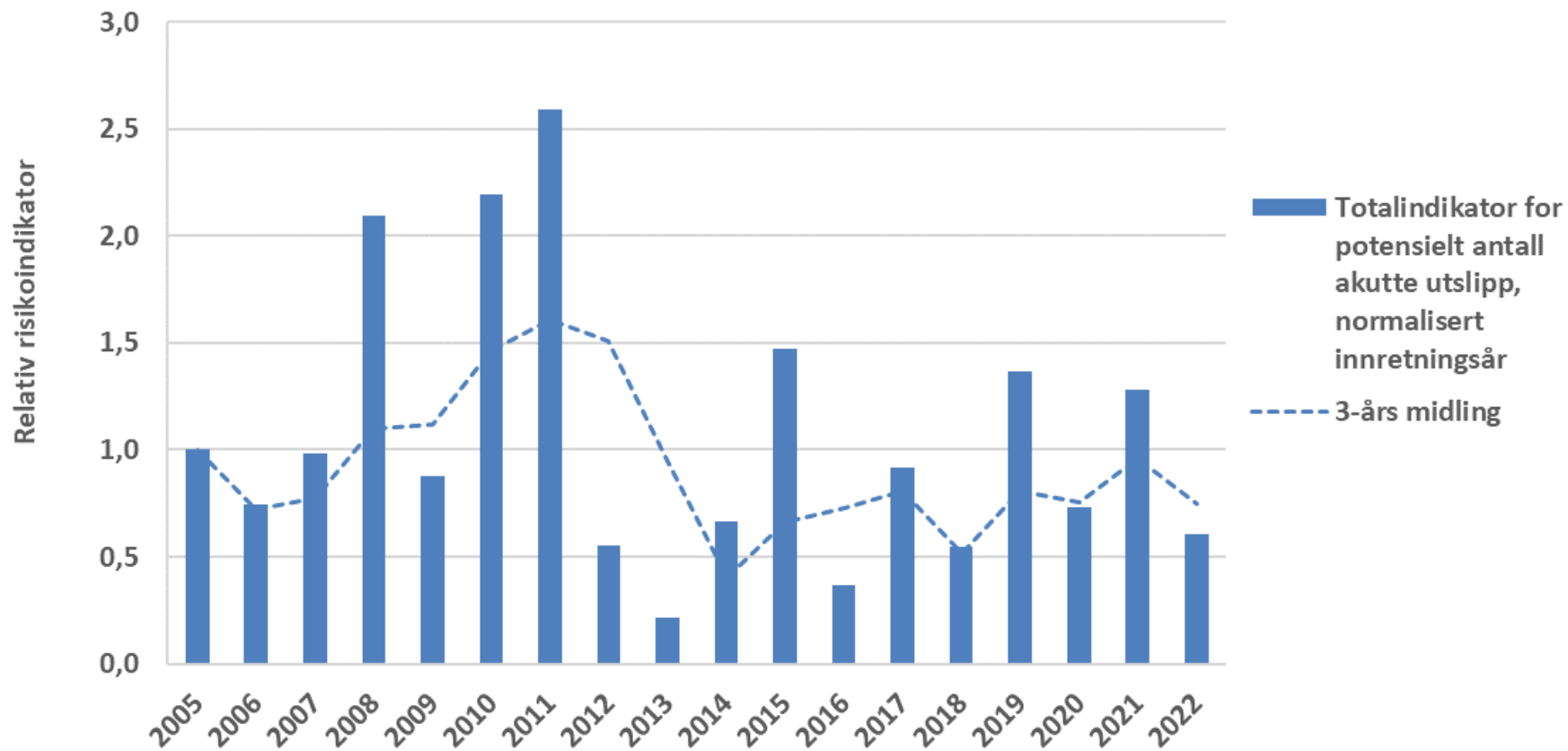
# RNNP

Akutte Utslipp

Vurdering av potensielle utslipp



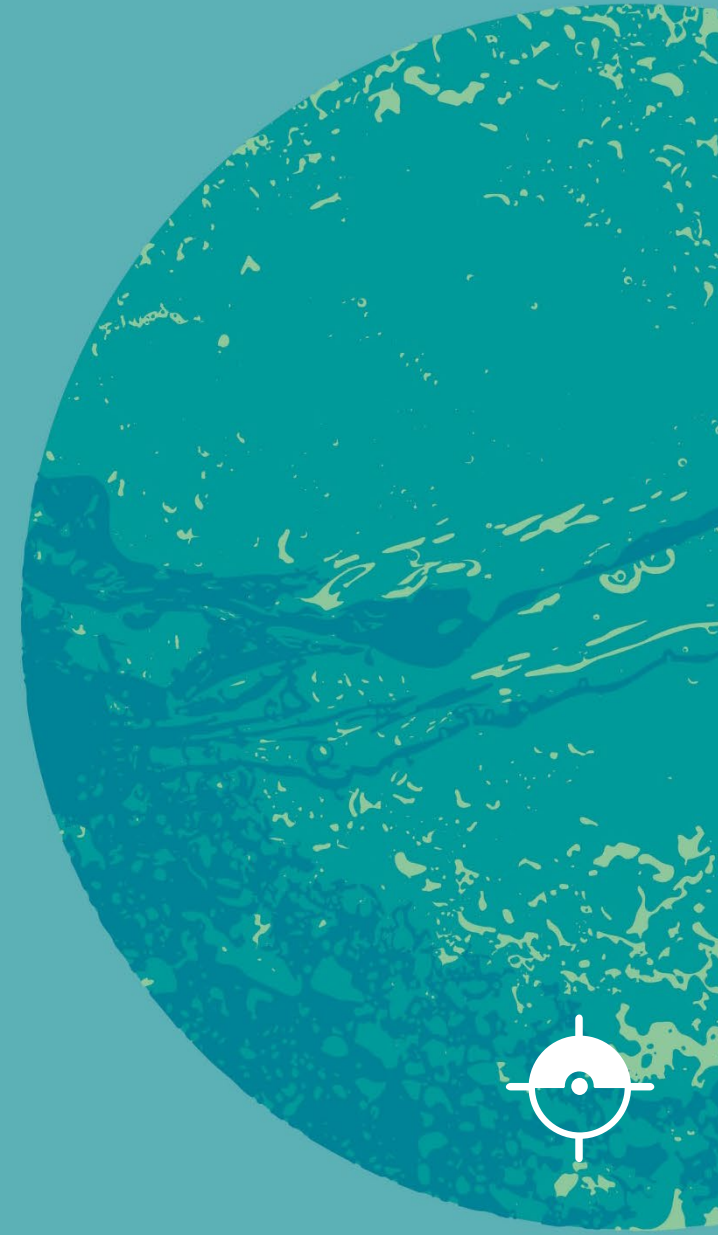
# Totalindikator – potensielt antall utslipp



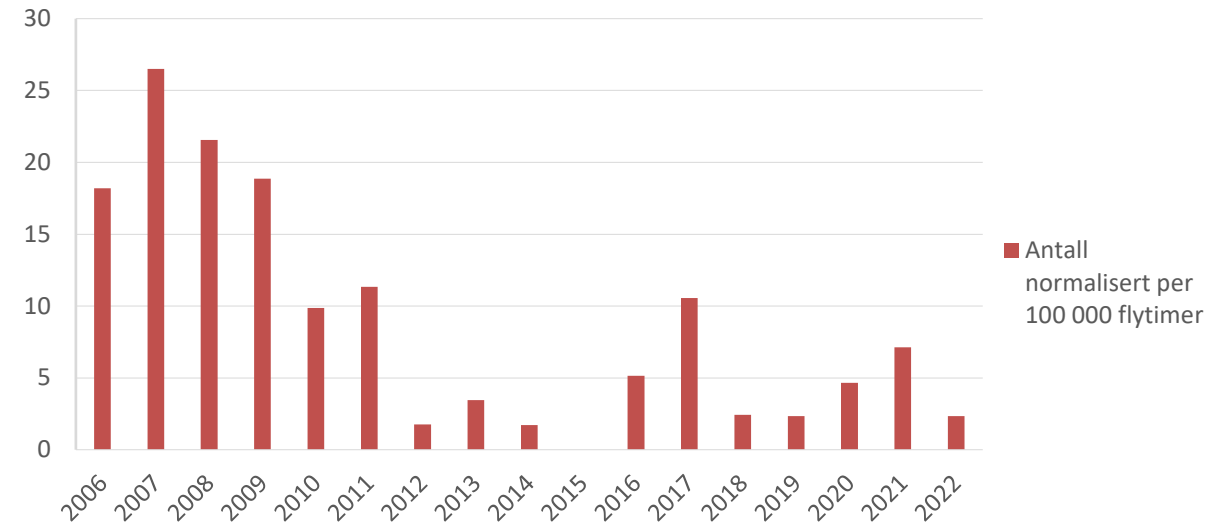
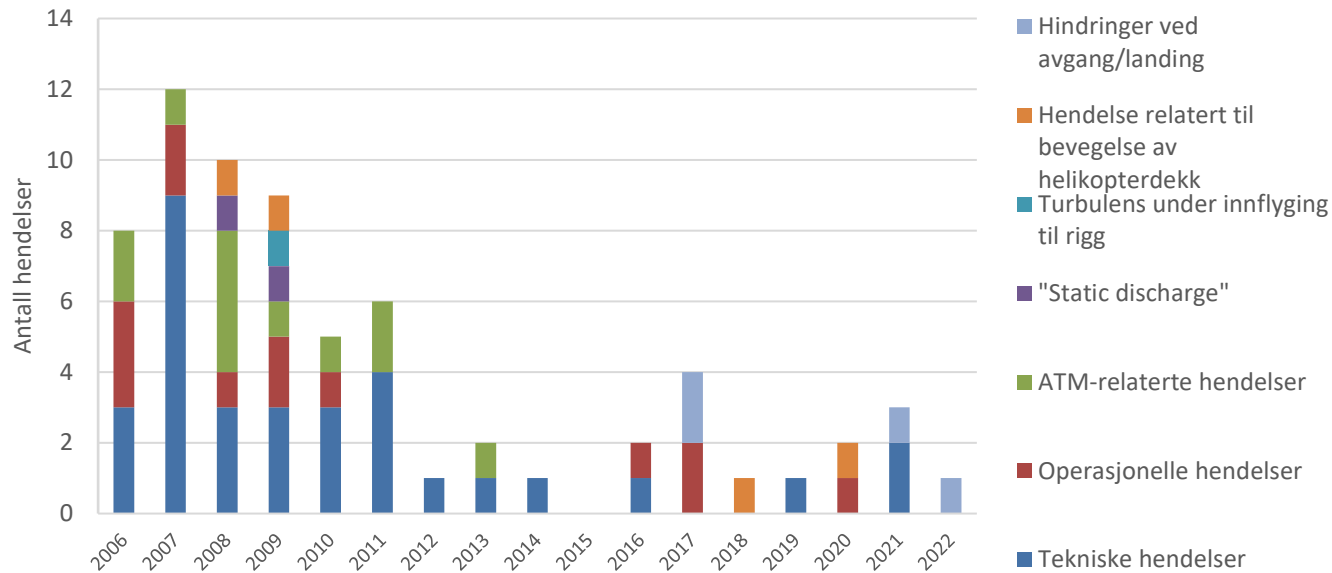


# RNNP

## Helikopter

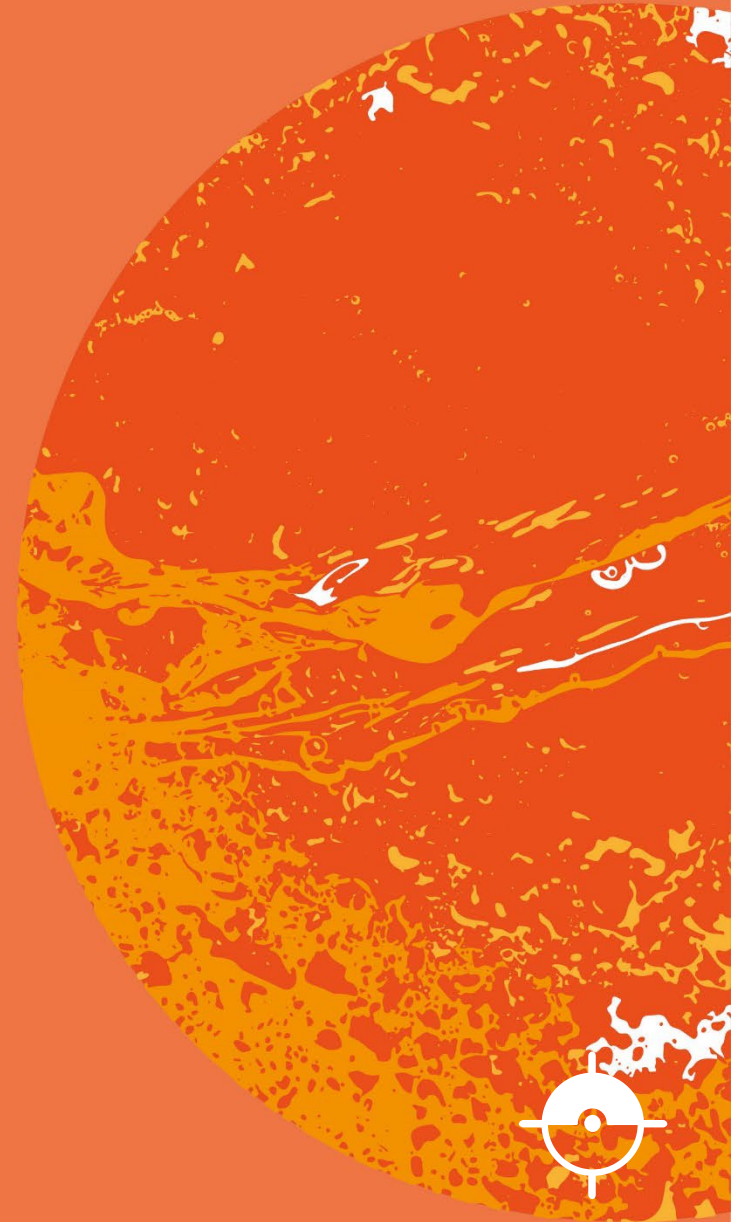


# Alvorligste tilløpshendelser - liten/middels gjenværende sikkerhetsmargin mot fatal ulykke

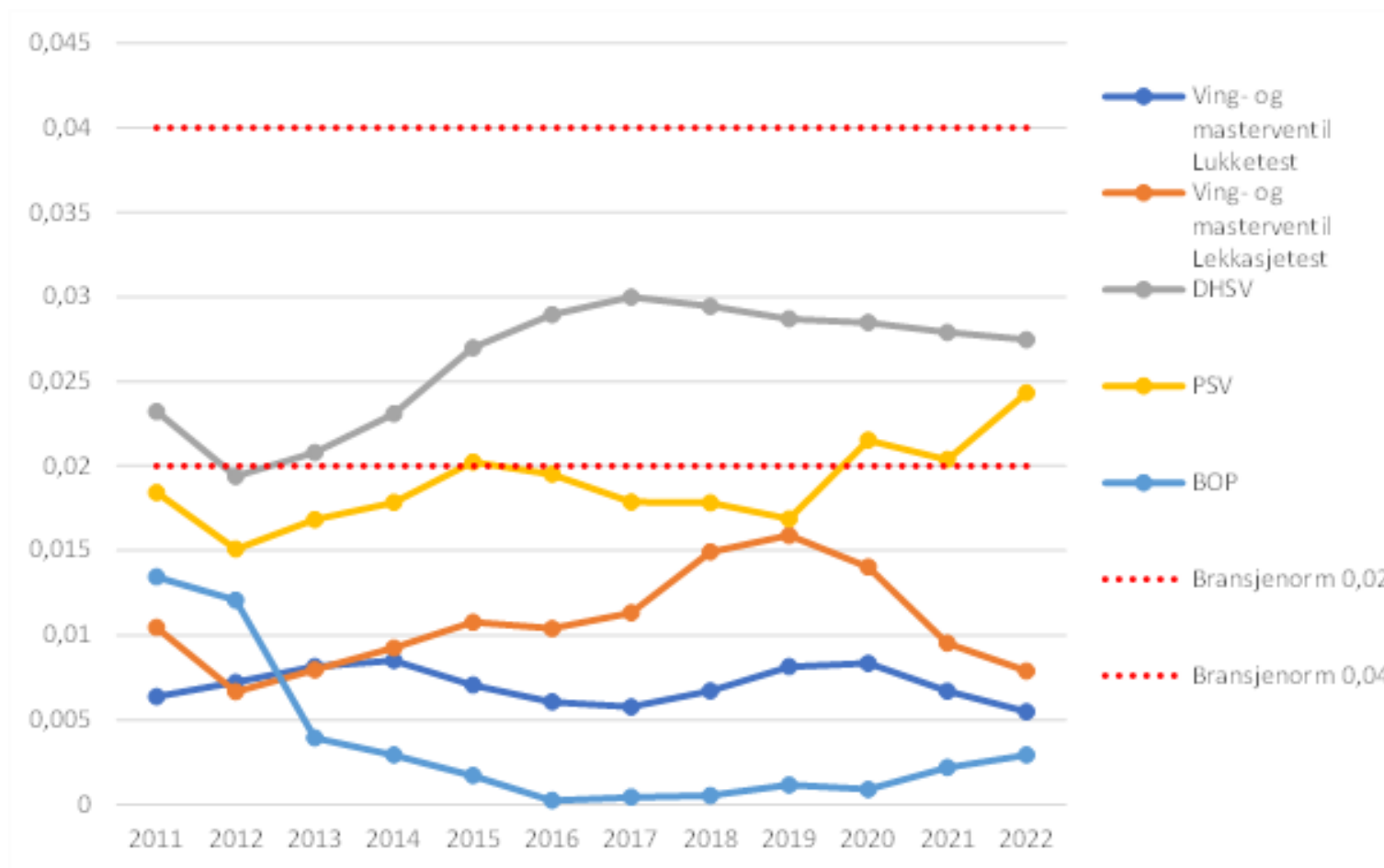


# RNNP

Barrieredata og vedlikehold  
Norsk sokkel



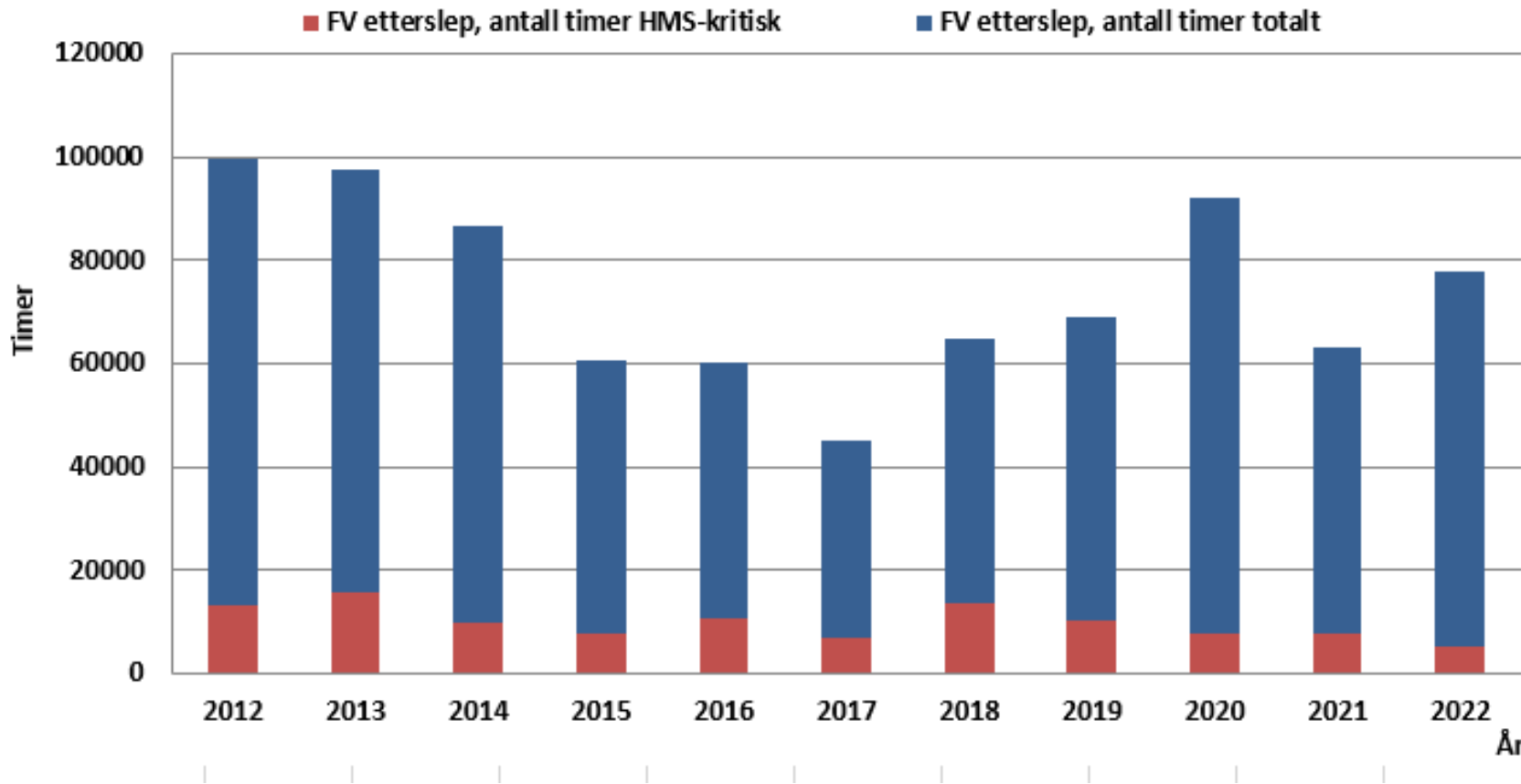
# Midlere andel feil med 3 år rullerende snitt



Antall feil

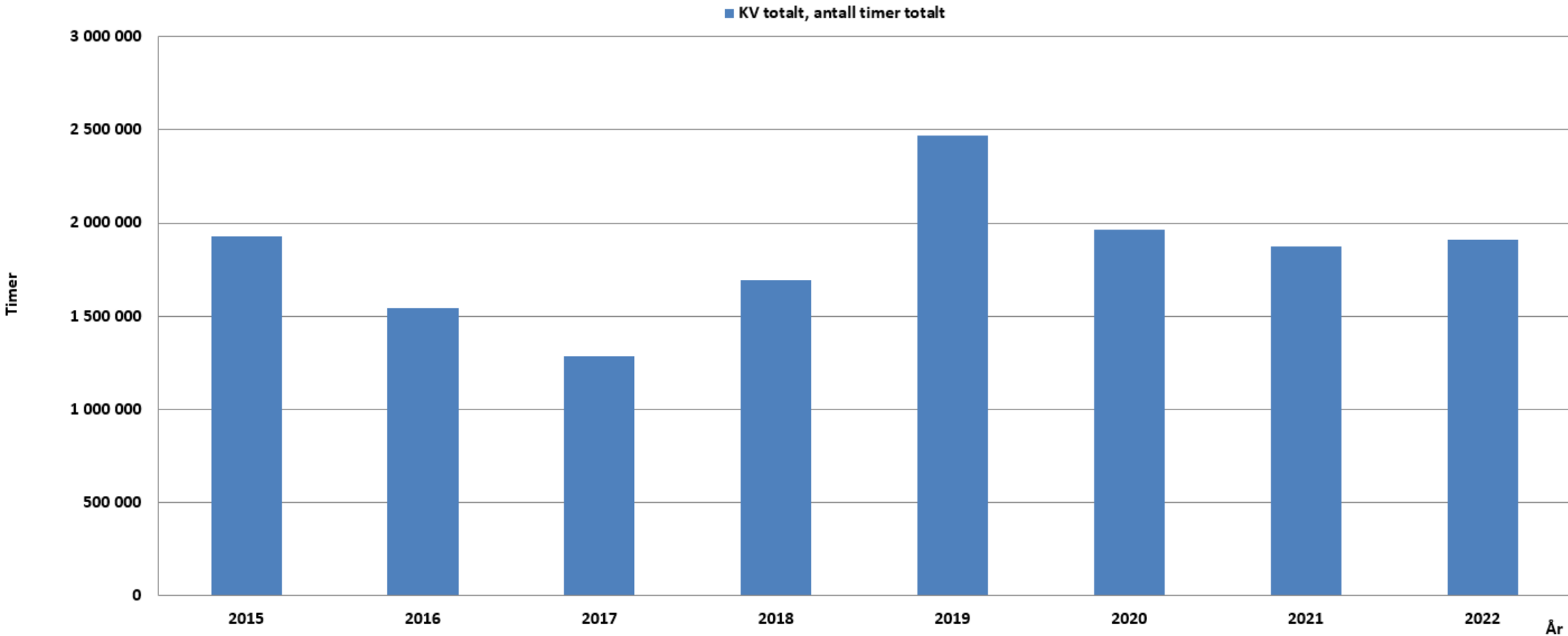
Antall tester

# Etterslepet i forebyggende vedlikehold for de permanent plasserte innretningene



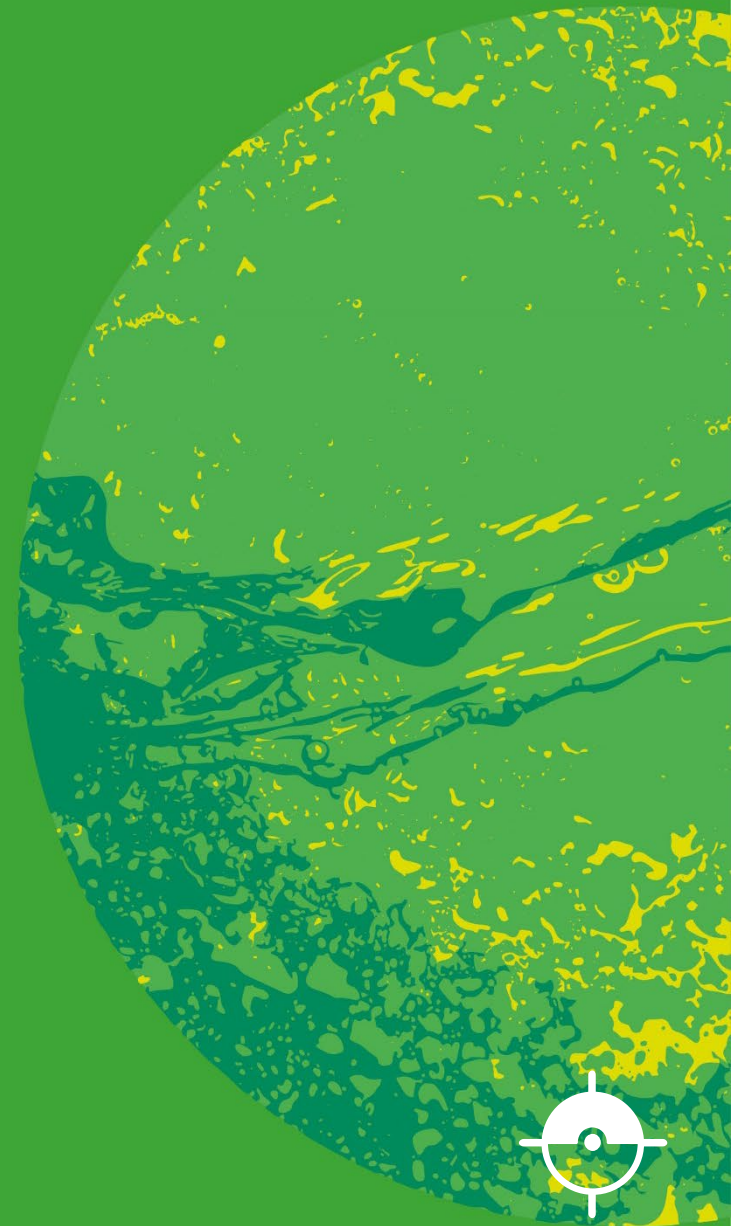
# Korrigerende vedlikehold (identifisert, ikke utført) for de permanent plasserte innretningene

RNNP

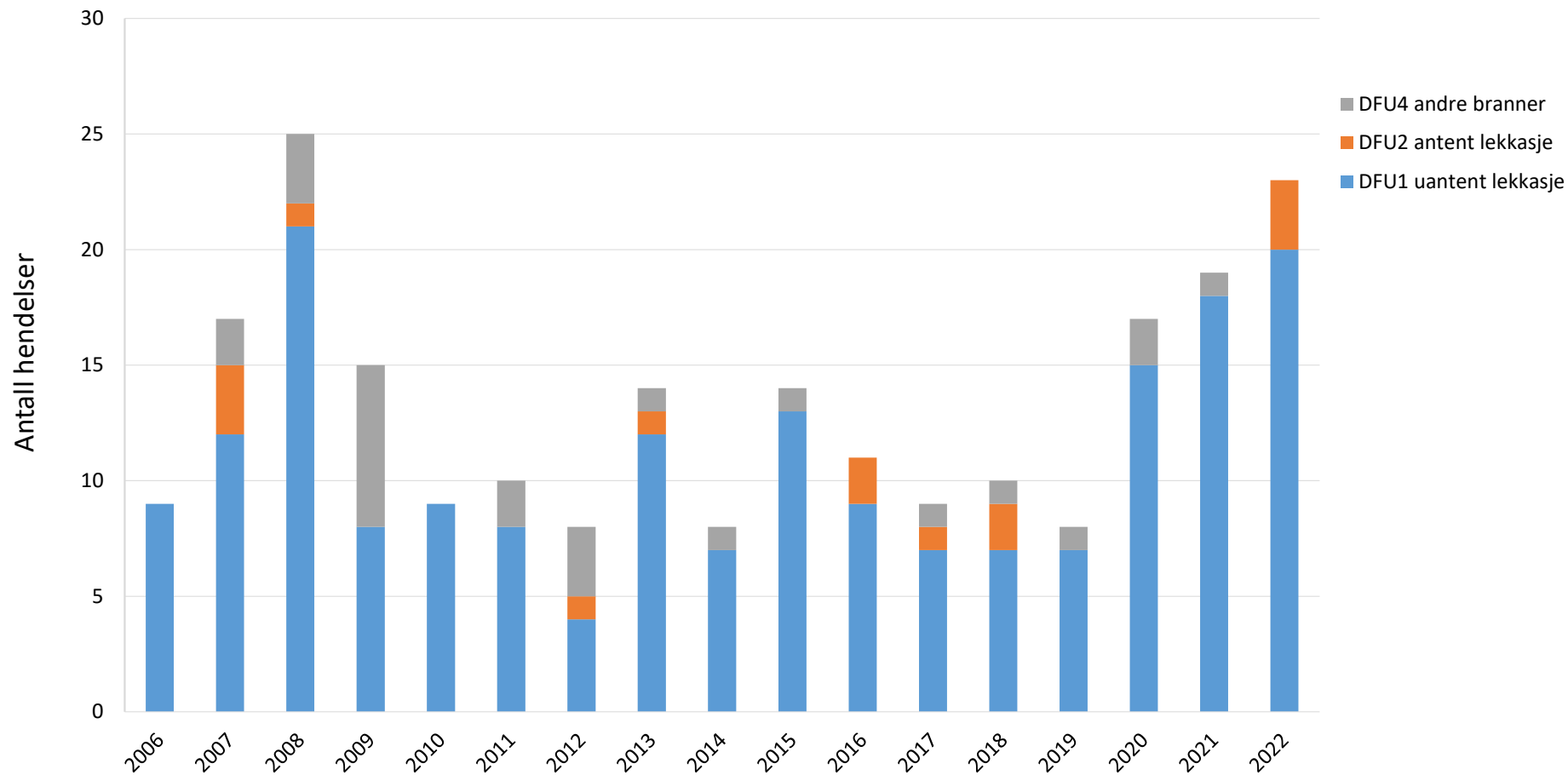


# RNNP

LAND 2022

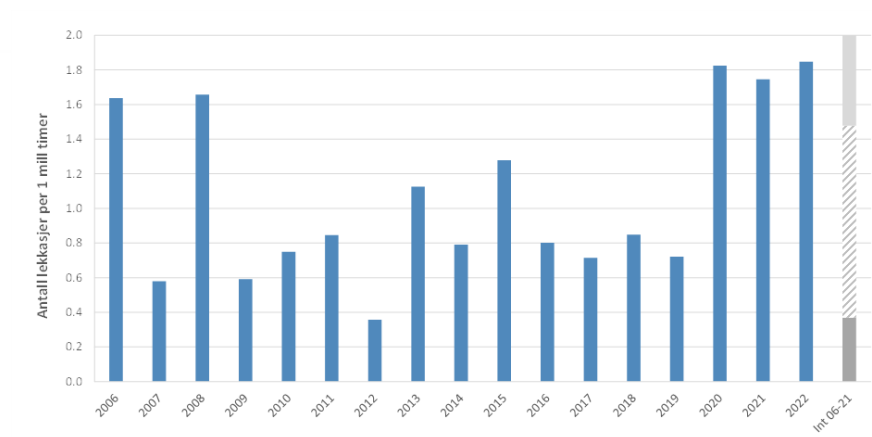
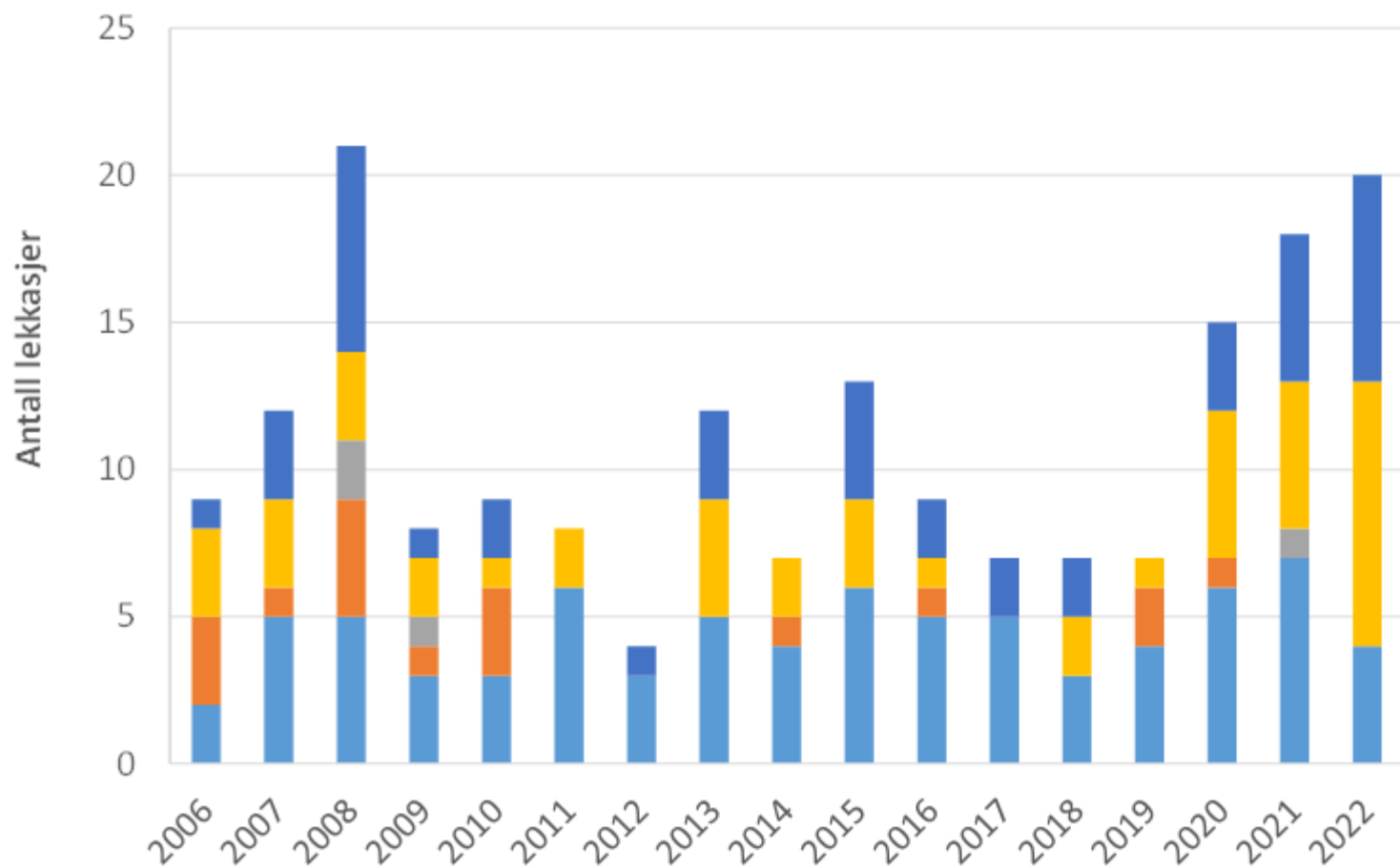


# Registrering tilløpshendelser – storulykkepotensial, 2006-2022





# Uantente lekkasjer, 2006 - 2022



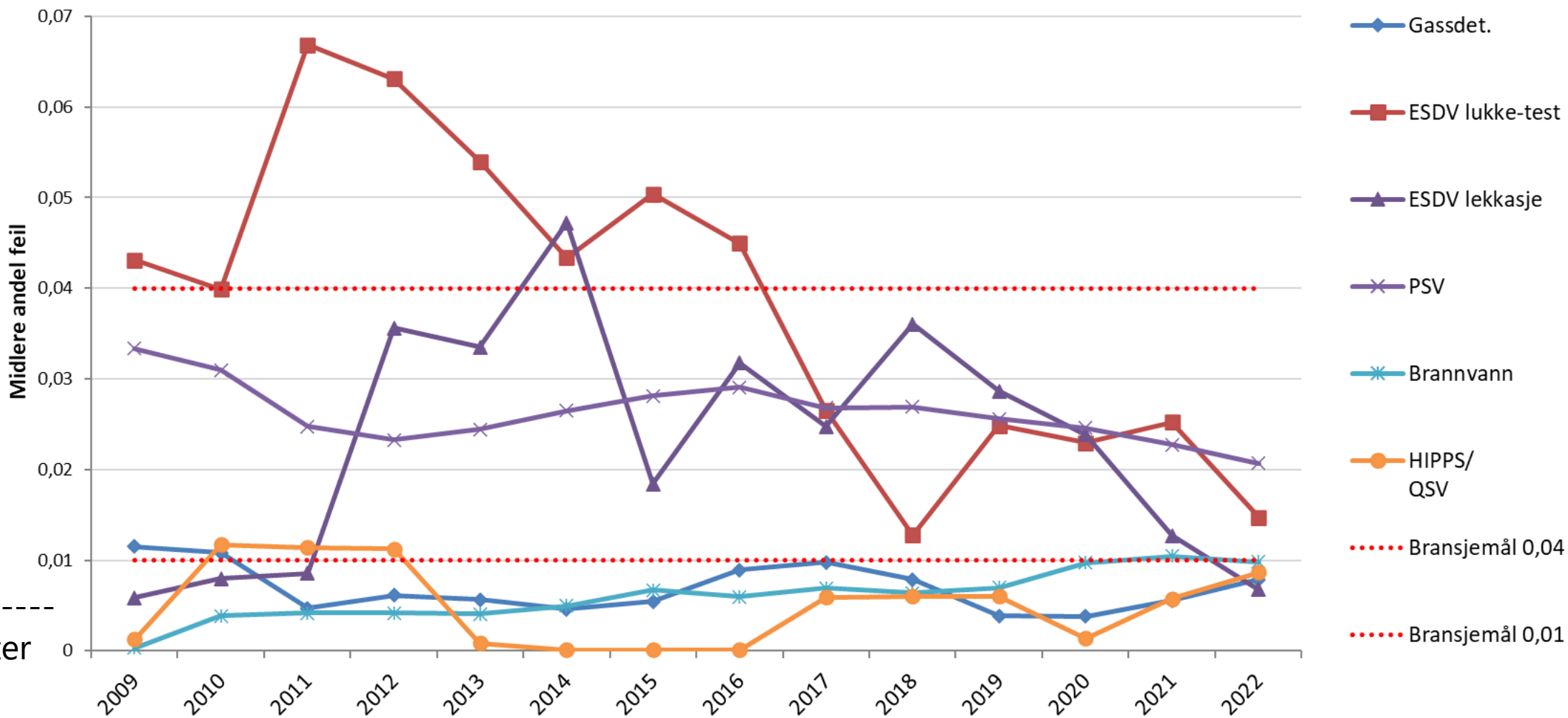
- $\geq 1$  m<sup>3</sup> væske
- $< 1$  m<sup>3</sup> væske
- $\geq 10$  kg/s gass
- 1-10 kg/s gass
- 0,1-1 kg/s gass

# RNNP

Barrieredata og vedlikehold  
LANDANLEGG



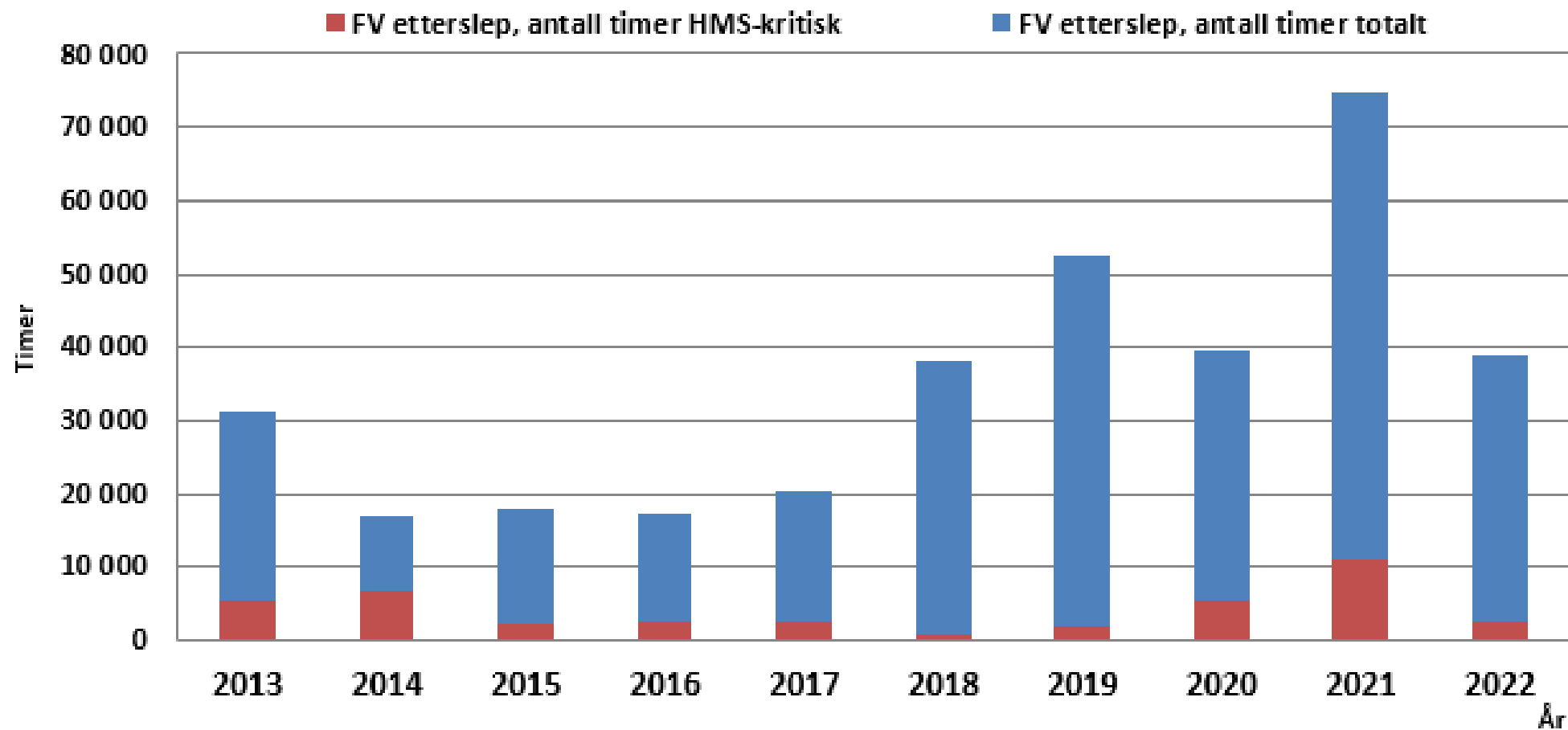
# Utvikling i feilandel



Antall feil

Antall tester

# Etterslepet i forebyggende vedlikehold for landanleggene



# Utestående KV inkludert HMS-kritisk KV for landanleggene

